

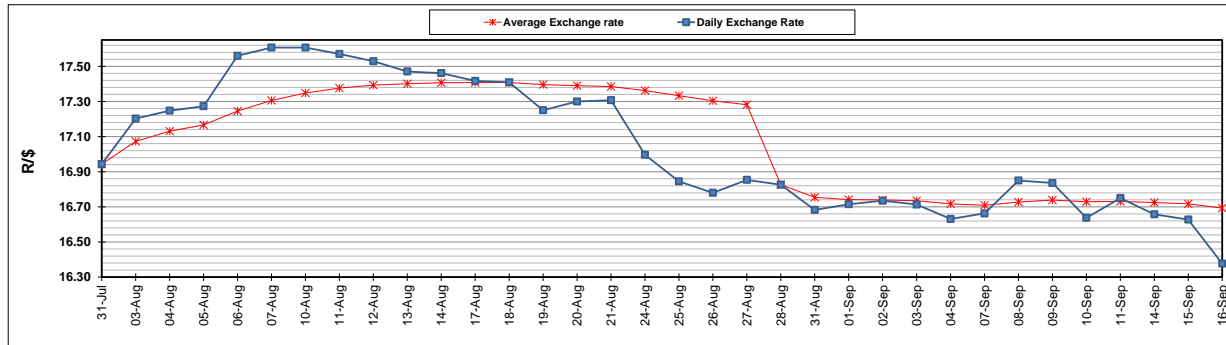
	PETROL 95 ULP	PETROL 93 ULP & LRP	DIESEL 0.05%	DIESEL 0.005%	ILL. PAR.
GAUTENG PUMP PRICE (SA c/l) AS FROM 02/09/2020	1,518.000	1,489.000	-	-	-
WHOLESALE PRICE (SA c/l) AS FROM 02/09/2020	-	-	1,327.560	1,331.960	716.828
SINGLE NATIONAL MAXIMUM RETAIL PRICE	-	-	-	-	899.000
BASIC FUEL PRICE - 16/09/2020 (SA c/l)	527.582	514.839	470.635	473.491	421.854
PRESS RELEASE CONTRIBUTION TO BFP 02/09/2020 - 16/09/2020 (SA c/l)	565.470	546.470	576.630	581.030	512.128
UNIT OVER/(UNDER) RECOVERY - 16/09/2020 (SA c/l)	37.888	31.631	105.995	107.539	90.274
AVERAGE BASIC FUEL PRICE 28/08/2020 - 16/09/2020	529.037	519.258	492.333	494.407	433.001
AVERAGE UNIT OVER/(UNDER) RECOVERY 28/08/2020 - 16/09/2020	37.355	28.134	88.797	91.123	84.699

### ANALYSIS MOVEMENT OF AVERAGE OVER/(UNDER) RECOVERY

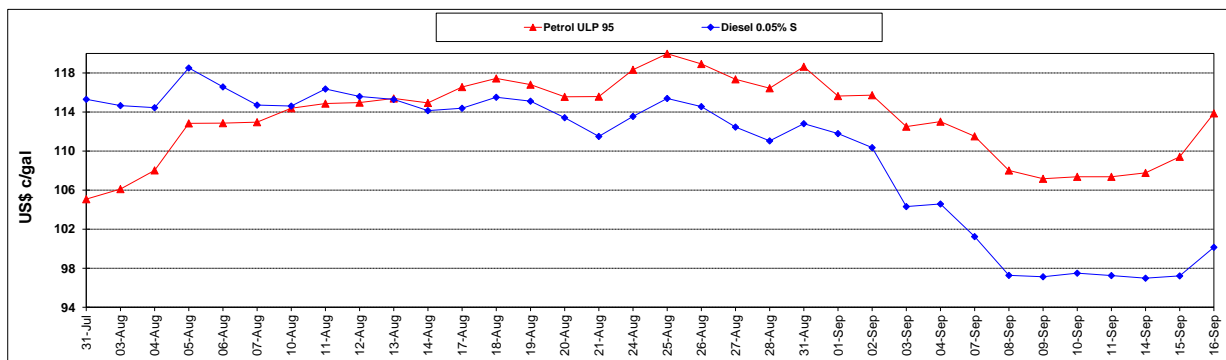
	PETROL 95	PETROL 93	DIESEL 0.05%	DIESEL 0.005%	ILL. PAR.
- MOVEMENT IN INTERNATIONAL PRODUCT PRICES	18.703	9.827	71.440	73.693	69.433
- MOVEMENT IN EXCHANGE RATE	18.651	18.306	17.357	17.430	15.265
AVERAGE UNIT OVER/(UNDER) RECOVERY 28/08/2020 - 16/09/2020	37.355	28.134	88.797	91.123	84.699

### R/\$ EXCHANGE RATE - (R/\$16.3770 - 16/09/2020)

#### EXCHANGE RATE USED IN BASIC FUEL PRICE



#### INTERNATIONAL PRODUCT PRICES OF BASKET USED IN BASIC FUEL PRICE



#### BASIC FUEL PRICE IN SA CENTS PER LITRE

